

Flöte II

3 Strophen

3 Strophen

Vorspiel



3 Strophen

3 Strophen

Vorspiel



Oboe I

3 Strophen

Vorspiel 4 3 Strophen



Oboe II

3 Strophen

Vorspiel 3 Strophen



Klarinette (B)

3 Strophen

Vorspiel

3 Strophen



Horn (F)

3 Strophen

3 Strophen

Vorspiel



Drums

Vorspiel

O du fröhliche



3 Strophen

3 Strophen



fitavre

O du fröhliche

Vorspiel

3 Strophen

5 D **3 Strophen** D G D D A E A E E A

13 A Dm hm D G

17 D G hm D D A7 D

Violine II

O du fröhliche

Vorspiel

3 Strophen

The first staff of music shows the introduction in G major, 4/4 time. It begins with a treble clef, a key signature of one sharp (F#), and a 4/4 time signature. The melody consists of quarter and eighth notes, ending with a double bar line. The text '3 Strophen' is written below the staff.

5 3 Strophen

The second staff of music starts at measure 5. It continues the melody with quarter and eighth notes. The text '5 3 Strophen' is written above the staff.

11

The third staff of music starts at measure 11. It continues the melody with quarter and eighth notes. The text '11' is written above the staff.

16

The fourth staff of music starts at measure 16. It continues the melody with quarter and eighth notes, ending with a double bar line. The text '16' is written above the staff.

Viola

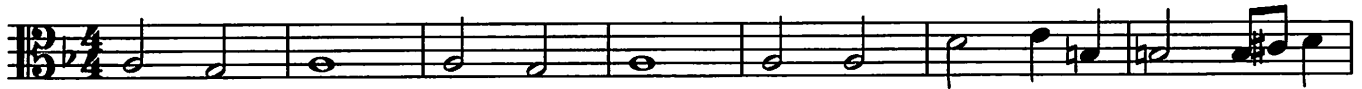
O du fröhliche

Vorspiel



3 Strophen

5 3 Strophen



12



17



Cello

O du fröhliche

Vorspiel



3 Strophen

5 3 Strophen



13



17



O du fröhliche

Cella/Bass/Fg

Vorspiel

arco 3 Strophen

The introduction consists of a single staff of music in bass clef, 4/4 time, and B-flat major. It begins with a whole note chord of B-flat and D, followed by a half note chord of E-flat and G, and a quarter note chord of F and A-flat. The melody continues with a quarter note G, a half note F, and a quarter note E-flat. The piece concludes with a whole note chord of B-flat and D.

5 3 Strophen

The first three strophes are indicated by a measure rest at the beginning of the staff. The notation for the first three strophes is: a whole note chord of B-flat and D, a half note chord of E-flat and G, a quarter note chord of F and A-flat, a quarter note G, a half note F, and a quarter note E-flat.

13

Strophe 4 is indicated by a measure rest at the beginning of the staff. The notation for strophe 4 is: a whole note chord of B-flat and D, a half note chord of E-flat and G, a quarter note chord of F and A-flat, a quarter note G, a half note F, and a quarter note E-flat.

17

The final strophe is indicated by a measure rest at the beginning of the staff. The notation for the final strophe is: a whole note chord of B-flat and D, a half note chord of E-flat and G, a quarter note chord of F and A-flat, a quarter note G, a half note F, and a quarter note E-flat.

Flöte I

3 Strophen

Vorspiel

3 Strophen

